

Sanitaire

English

Commercial BackPack Vacuum SC500 Series Owner's Guide



IMPORTANT

Do not return this product to the store.
Call 1-800-800-8975* Monday - Friday,
8 am to 7:30 pm CST and 10 am - 6:30 pm
Saturday or visit our website,
www.sanitairevac.com for the following:

- assembly problems
- replacement of broken or missing items
- to order replacement parts and accessories
- to locate the nearest Sanitaire Warranty Station

* En Mexico llame al 5670-6169.

PLEASE RETAIN

We suggest you record the model, type and serial numbers below. They are located on the silver rating plate on your cleaner. For prompt and complete service information, always refer to these numbers when inquiring about service.

Model & Type _____

Serial No. _____

It is also important to keep your receipt as proof of date of purchase.

www.sanitairevac.com

INDEX

Service Information	2
Important Safeguards	2
Grounding Instructions	3
Identify Parts	3
Operating Instructions	4
Maintenance	5
Wearing the BackPack Vacuum	5
Warranty	6

Service Information

The instructions in this booklet serve as a guide to routine maintenance. If additional service is required, telephone toll free:

USA: 1-800-800-8975

Mexico: 5670-6169

Canada: 1-800-282-2886

If you prefer, you can write to Electrolux Home Care Products, North America, Service Division, 10200 David Taylor Drive, Charlotte, NC 28262. In Canada write to Electrolux Home Care Products, North America, Service Division, 5855 Terry Fox Way, Mississauga, ON, Canada L5V 3E4. Refer to The Sanitaire Limited Warranty for complete service information.



DO NOT OIL the motors or the brush roll at any time. The bearings are permanently lubricated and sealed.

IMPORTANT SAFEGUARDS

When using an electrical appliance, basic precautions should always be followed, including the following:

READ ALL INSTRUCTIONS BEFORE USING THIS VACUUM CLEANER.

WARNING

To reduce the risk of fire, electric shock or injury:

- Do not use outdoors or on wet surfaces.
- **Do not leave vacuum cleaner unattended when plugged in.** Turn off the switch, and unplug the electrical cord when not in use and before servicing.
- Do not allow to be used as a toy. Close attention is necessary when used by or near children.
- Use only as described in this manual. Use only manufacturer's recommended attachments.
- Do not use with damaged cord or plug. If vacuum cleaner is not working as it should, has been dropped, damaged, left outdoors or dropped into water, return it to a service center before using.
- Do not pull or carry by cord, use cord as a handle, close a door on cord or pull cord around sharp edges or corners. Do not run vacuum cleaner over cord. Keep cord away from heated surfaces.
- Connect to a properly grounded outlet only. (Refer to grounding instructions).
- Do not use extension cords or outlets with inadequate current carrying capacity.
- Turn off all controls before unplugging.
- Do not unplug by pulling on cord. To unplug, grasp the plug, not the cord.
- Do not handle plug or vacuum cleaner with wet hands or operate without shoes.
- Do not put any object into openings. Do not use with any opening blocked; keep free of dust, lint, hair and anything that may reduce airflow.
- This vacuum cleaner creates suction. Keep hair, loose clothing, fingers and all parts of body away from openings and moving parts.
- Do not pick up anything that is burning or smoking, such as cigarettes, matches or hot ashes.
- Do not use without dust bag or filter(s) in place.
- Use extra care when cleaning on stairs.
- Do not pick up flammable or combustible liquids such as gasoline, or use in areas where they may be present.
- Store your cleaner indoors in a cool, dry area.
- Keep your work area well lighted.
- Unplug electrical appliances before vacuuming them.

**SAVE THESE
INSTRUCTIONS**

Commercial BackPack SC500 Series Owner's Guide

Grounding Instructions

This appliance must be grounded. If it should malfunction or breakdown, grounding provides a path of least resistance for electric current to reduce the risk of electric shock. This appliance is equipped with a cord having an equipment-grounding conductor and grounding plug. The plug must be plugged into an appropriate outlet that is properly installed and grounded in accordance with all local codes and ordinances.

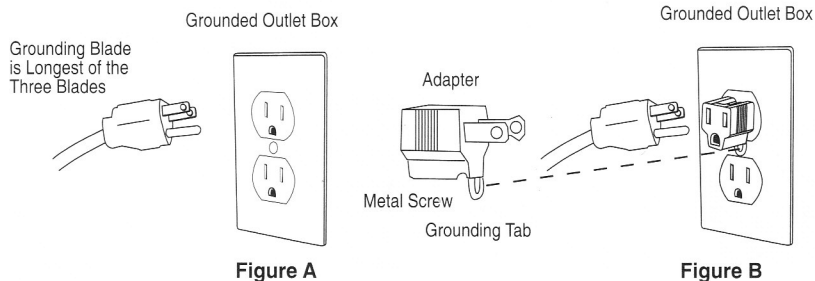
DANGER

Improper connection of an equipment-grounding conductor can result in risk of electrical shock. Check with a qualified electrician or service person of you are in doubt as to whether the outlet is properly grounded. Do not modify the plug provided with the appliance. If it will not fit the outlet, have a proper outlet installed by a qualified technician.

This appliance is for use on a nominal 120-volt circuit and has a grounding plug that looks like the plug illustrated in Figure A. A temporary adaptor which looks like the adaptor illustrated in Figure B maybe used to connect this plug to a two-pole receptacle, as shown, if a properly grounded outlet is not available. The temporary adaptor should be used only until a properly grounded outlet, Figure A, can be installed by a qualified electrician. The green-colored rigid ear lug, or the like, extending from the adaptor must be connected to a permanent ground such as a properly grounded outlet box cover. Whenever the adaptor is used, it must be held in place by a metal screw.



NOTE: In Canada, the use of a temporary adaptor is not permitted by the Canadian Electrical Code.



Identify BackPack Vacuum Component Parts

Unpack accessories from carton and remove vacuum cleaner.

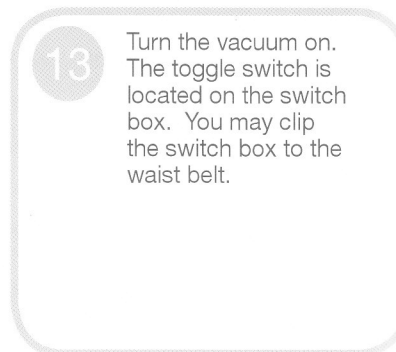
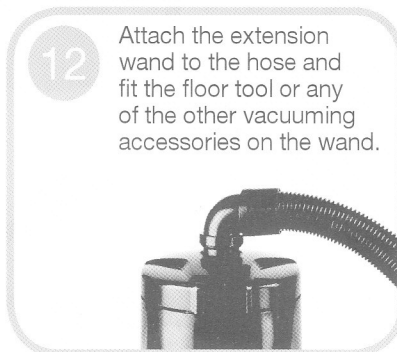
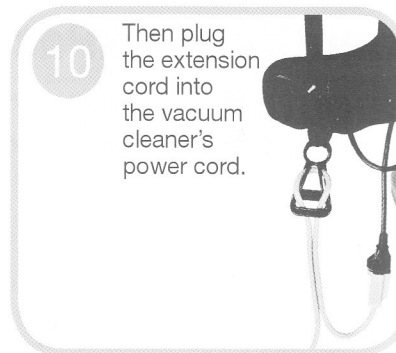
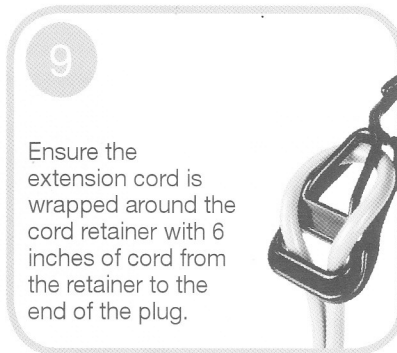
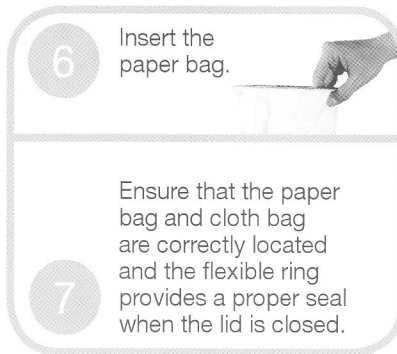
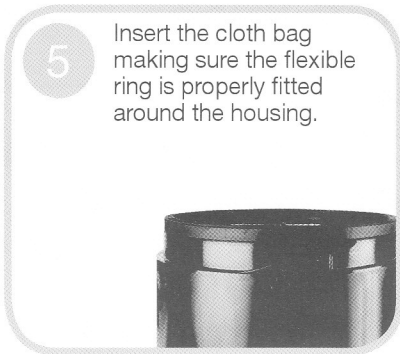
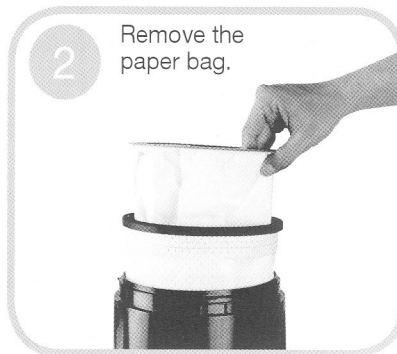


Commercial Backpack SC500 Series Owner's Guide

Operating Instructions & QuickStart Guide

Please read the following operating instructions carefully. They will help you get the best performance from this professional quality vacuum cleaner and also to maintain it in optimum condition.

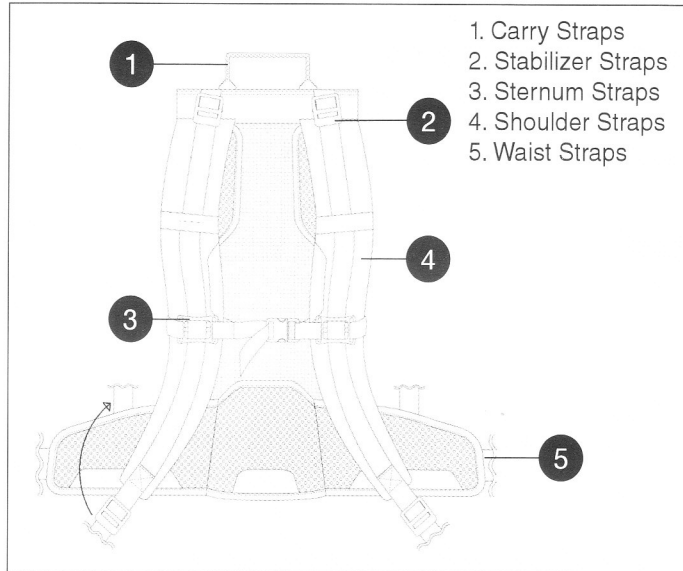
Follow these simple steps for easy and effective operation of the Backpack Vacuum.



Commercial BackPack SC500 Series Owner's Guide

Wearing the BackPack Vacuum

The BackPack is designed to balance the weight of the vacuum on the hips, not the shoulders.



Maintenance

Warning! Always unplug vacuum before cleaning, or making any adjustments or repairs.

- Clean the cloth vacuum bag regularly. After emptying the vacuum bag, turn it inside out and shake out as much dust from the fabric as possible. Optimum performance is achieved by using a paper vacuum bag with the cloth bag.
- Check the power cord for damage. Always unwind the cable completely.
- Ensure that the vacuum hose, the extension wand and the vacuuming accessories are not blocked.
- Ensure that the electrical outlet and the plug are securely connected. Incorrect connections may cause sparking and damage to the cable socket.
- Have your BackPack Vacuum serviced by an authorized repair service center if you suspect any potential problems.
- Use only approved paper vacuum bags.
- Ensure that the flexible vacuum bag ring provides a proper seal before vacuuming.

1. Loosen all the straps and place the vacuum on your back.
2. Place the waist straps over your hips and connect the buckle. Pull the straps forward to center the weight of the unit, so that it is concentrated on your hips. Fig (1)
3. Adjust the shoulder straps to tighten the BackPack on your shoulders, ensuring the weight is still concentrated on your hips. Fig (2)
4. Connect the sternum straps, and adjust to fit comfortably across your chest. Fig (3)
5. Adjust the stabilizer straps as needed. Fig (4)

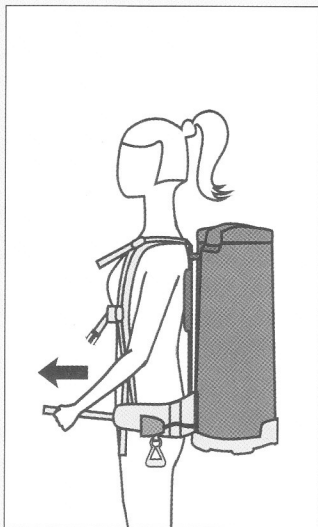


Figure 1

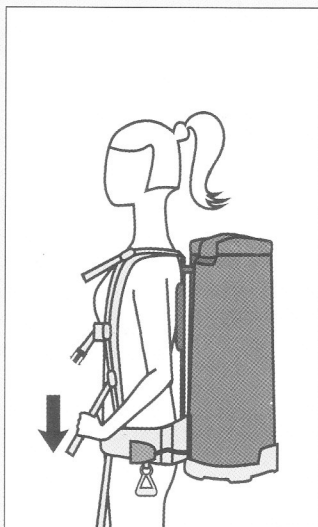


Figure 2

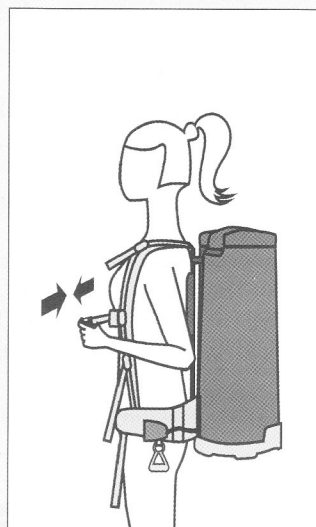


Figure 3

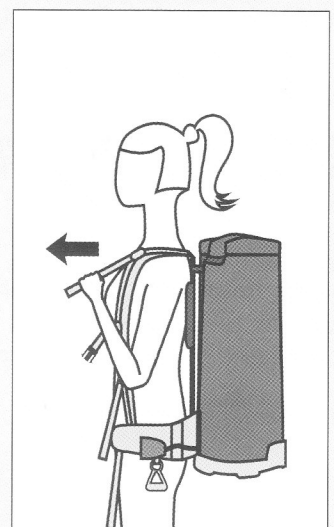


Figure 4

THE SANITAIRE® COMMERCIAL LIMITED WARRANTY

WHAT THIS WARRANTY COVERS

Your Sanitaire commercial cleaner is warranted to be free from all defects in material and workmanship in normal use FOR A PERIOD OF TWO YEARS. The warranty is granted only to the original purchaser of the cleaner. The warranty is subject to the following provisions.

WHAT THIS WARRANTY DOES NOT COVER

- Parts of the cleaner that require replacement under normal use, such as bumpers, bags, and hoses.
- Damages or malfunctions caused by negligence, abuse or use not in accordance with the Owner's Guide.
- Defects or damages caused by unauthorized service or the use of other than Genuine Sanitaire parts.

WHAT ELECTROLUX HOME CARE PRODUCTS NORTH AMERICA WILL DO

Electrolux Home Care Products North America will, at its option, repair or replace a defective cleaner or cleaner part that is covered by this warranty. As a matter of warranty policy, Electrolux Home Care Products North America will not refund the consumer's purchase price.

OBTAINING WARRANTY SERVICE

To obtain warranty service you must return the defective cleaner or cleaner part along with proof of purchase to any Sanitaire Authorized Warranty Station. You will find the nearest location in the Yellow Pages or online at sanitairevac.com under Service Locator. Be certain that the Warranty Station is a Sanitaire Authorized Dealer.

For the location of the nearest Sanitaire Authorized Warranty Station or for service information, telephone toll free:

USA: 1.800.800.8975

Mexico: 5670.6169

Canada: 1.800.282.2886

If you prefer, you can write to:
Electrolux Home Care Products, North America
Service Division
10200 David Taylor Drive
Charlotte, NC 28262

In Canada write to:
Electrolux Home Care Products, North America
Service Division
5855 Terry Fox Way
Mississauga, ON
Canada L5V 3E4

If it is necessary to ship the cleaner outside your community to obtain warranty repair, you must pay the shipping charges to the Sanitaire Authorized Warranty Station. Return shipping charges will be paid by the Warranty Station. When returning parts for repair, please include the model type and serial number from the data plate on the cleaner.

FURTHER LIMITATIONS AND EXCLUSIONS

Any Warranty that may be implied in connection with your purchase or use of the cleaner, including any warranty of MERCHANTABILITY or any warranty for FITNESS for a PARTICULAR PURPOSE is limited to the duration of this warranty. Some states do not allow limitations on how long an implied warranty lasts, so the above limitations may not apply to you.

Your relief for the breach of this warranty is limited to the relief expressly provided above. IN NO EVENT SHALL ELECTROLUX HOME CARE PRODUCTS, NORTH AMERICA BE LIABLE FOR ANY CONSEQUENTIAL OR INCIDENTAL DAMAGES THAT YOU MAY INCUR IN CONNECTION WITH YOUR PURCHASE OR USE OF THE CLEANER. Some states do not allow the excluding or limitation of incidental or consequential damages, so the above limitation or excluding may not apply to you.

This warranty gives you specific legal rights. You may also have other rights which vary by state.

Sanitaire

Charlotte, North Carolina 28262